

Dog

Happy



Loose body, wagging tail, relaxed mouth

Safety Advice:

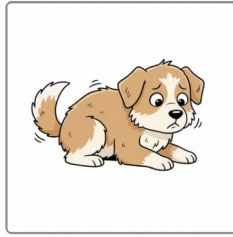
Approach slowly and pet gently.



TheBadgeArchive.com
Card Origin: Original Human Design

Dog

Scared



Crouched low, tail tucked, ears back

Safety Advice:

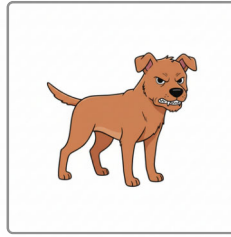
Give space and let the dog come to you.



TheBadgeArchive.com
Card Origin: Original Human Design

Dog

Warning



Stiff body, teeth showing, tail straight

Safety Advice:

Step back and find an adult.



TheBadgeArchive.com
Card Origin: Original Human Design

Dog

Tired



Sleeping in bed

Safety Advice:

Do not wake up a sleeping pet.



TheBadgeArchive.com
Card Origin: Original Human Design

Cat

Curious



Leaning forward, tail up

Safety Advice:

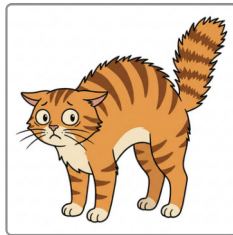
Offer your hand slowly and let the cat sniff.



TheBadgeArchive.com
Card Origin: Original Human Design

Cat

Scared



Arched back, puffed tail, wide eyes

Safety Advice:

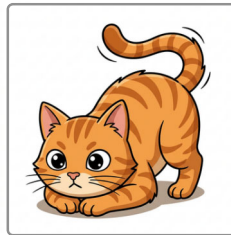
Move away and give the cat room.



TheBadgeArchive.com
Card Origin: Original Human Design

Cat

Playful



Crouched, wiggle hips, ready to pounce

Safety Advice:

Use a toy, not your hands.



TheBadgeArchive.com
Card Origin: Original Human Design

Cat

Upset



Ears flat against head

Safety Advice:

Step back and give some space.



TheBadgeArchive.com
Card Origin: Original Human Design

Rabbit

Nervous



Frozen still, ears straight up

Safety Advice:

Stay quiet and let the rabbit relax.



TheBadgeArchive.com
Card Origin: Original Human Design

Rabbit

Relaxed



Lying down with legs stretched out

Safety Advice:

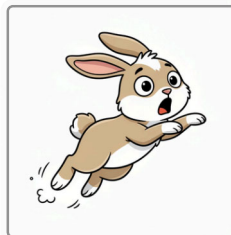
Pet gently on the back only.



TheBadgeArchive.com
Card Origin: Original Human Design

Rabbit

Startled



Jumping back with wide eyes

Safety Advice:

Stop moving and wait for calm.



TheBadgeArchive.com
Card Origin: Original Human Design

Rabbit

Hungry



Chewing on hay

Safety Advice:

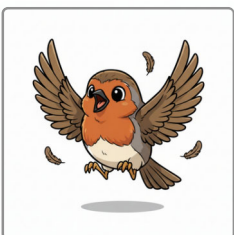
Sit quietly and watch the bunny eat.



TheBadgeArchive.com
Card Origin: Original Human Design

Bird

Excited



Hopping quickly with fluffed feathers

Safety Advice:

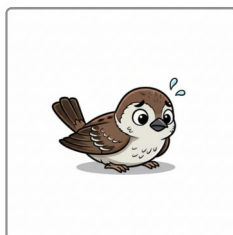
Watch quietly and avoid sudden movements.



TheBadgeArchive.com
Card Origin: Original Human Design

Bird

Scared



Pressed low with wings tight to body

Safety Advice:

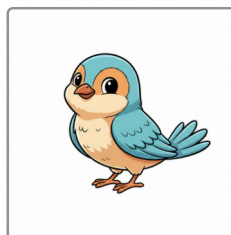
Step back and lower your voice.



TheBadgeArchive.com
Card Origin: Original Human Design

Bird

Friendly



Tilting head, relaxed wings

Safety Advice:

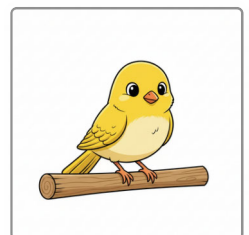
Offer food only with an adult.



TheBadgeArchive.com
Card Origin: Original Human Design

Bird

Calm



Sitting on a perch

Safety Advice:

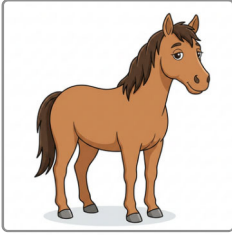
No poking and keep fingers away from the cage bars.



TheBadgeArchive.com
Card Origin: Original Human Design

Horse

Calm



Standing with soft eyes and relaxed ears

Safety Advice:

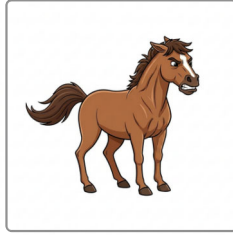
Pet gently with an adult nearby.



TheBadgeArchive.com
Card Origin: Original Human Design

Horse

Upset



Ears pinned back, tail swishing hard

Safety Advice:

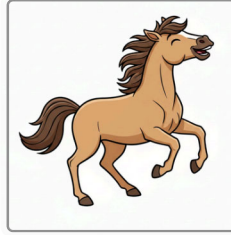
Move far away and tell an adult.



TheBadgeArchive.com
Card Origin: Original Human Design

Horse

Playful



Tossing head, prancing

Safety Advice:

Watch from a safe distance.



TheBadgeArchive.com
Card Origin: Original Human Design

Horse

Restless



Shifting feet and moving side to side

Safety Advice:

Check surroundings and allow them to move if safe.



TheBadgeArchive.com
Card Origin: Original Human Design

Squirrel

Curious



Standing on hind legs, sniffing the air

Safety Advice:

Watch from far away and do not feed.



TheBadgeArchive.com
Card Origin: Original Human Design

Squirrel

Scared



Darting up a tree, tail flicking

Safety Advice:

Stay still and let it climb.



TheBadgeArchive.com
Card Origin: Original Human Design

Squirrel

Busy



Digging or gathering food

Safety Advice:

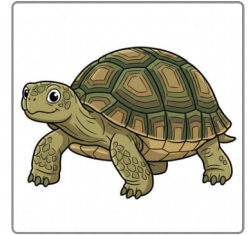
Give space and avoid chasing.



TheBadgeArchive.com
Card Origin: Original Human Design

Turtle

Calm



Walking slowly with head out

Safety Advice:

Watch gently and avoid touching the shell.



TheBadgeArchive.com
Card Origin: Original Human Design

Turtle

Scared



Pulled fully into shell

Safety Advice:

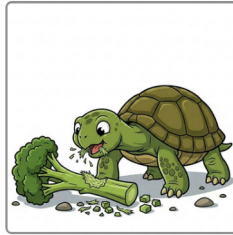
Leave it alone until it feels safe.



TheBadgeArchive.com
Card Origin: Original Human Design

Turtle

Hungry



Chomping on a broccoli stalk

Safety Advice:

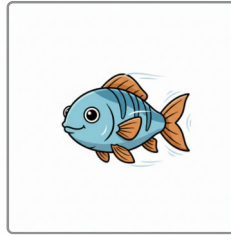
Watch at a safe distance.



TheBadgeArchive.com
Card Origin: Original Human Design

Fish

Calm



Swimming slowly with smooth movements

Safety Advice:

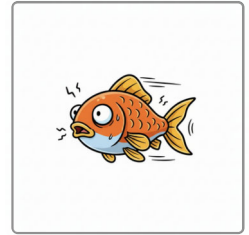
Keep hands out of the tank.



TheBadgeArchive.com
Card Origin: Original Human Design

Fish

Startled



Darting quickly to one side

Safety Advice:

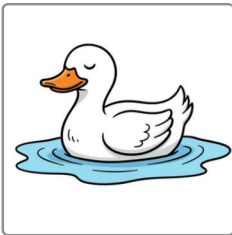
Move slowly near the tank.



TheBadgeArchive.com
Card Origin: Original Human Design

Duck

Calm



Floating on water with smooth paddling

Safety Advice:

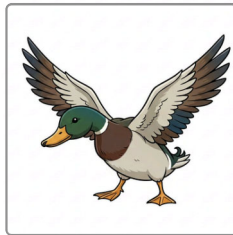
Watch quietly and stay on the shore.



TheBadgeArchive.com
Card Origin: Original Human Design

Duck

Warning



Wings out, head low, loud quack

Safety Advice:

Back away and give the duck space.



TheBadgeArchive.com
Card Origin: Original Human Design

Bee

Busy



Sitting on a flower, collecting nectar

Safety Advice:

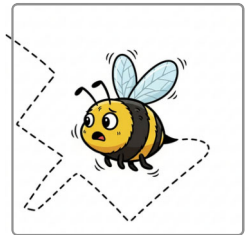
Leave it alone and watch from a safe distance.



TheBadgeArchive.com
Card Origin: Original Human Design

Bee

Alarmed



Buzzing wildly around

Safety Advice:

Move away slowly and calmly.



TheBadgeArchive.com
Card Origin: Original Human Design